



XP-PEN®

Wireless Pairing Guidance Diagram for Pen Tablet

Step 1: open the wireless pairing tool, and then connect the tablet and wireless receiver to the computer.

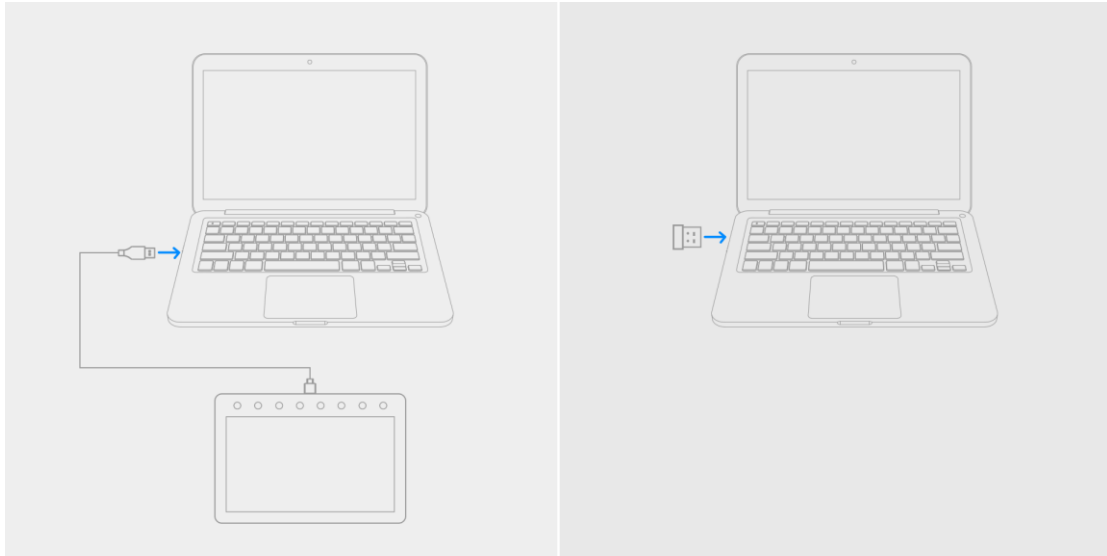


image1 -- Connect the tablet and wireless receiver to the computer

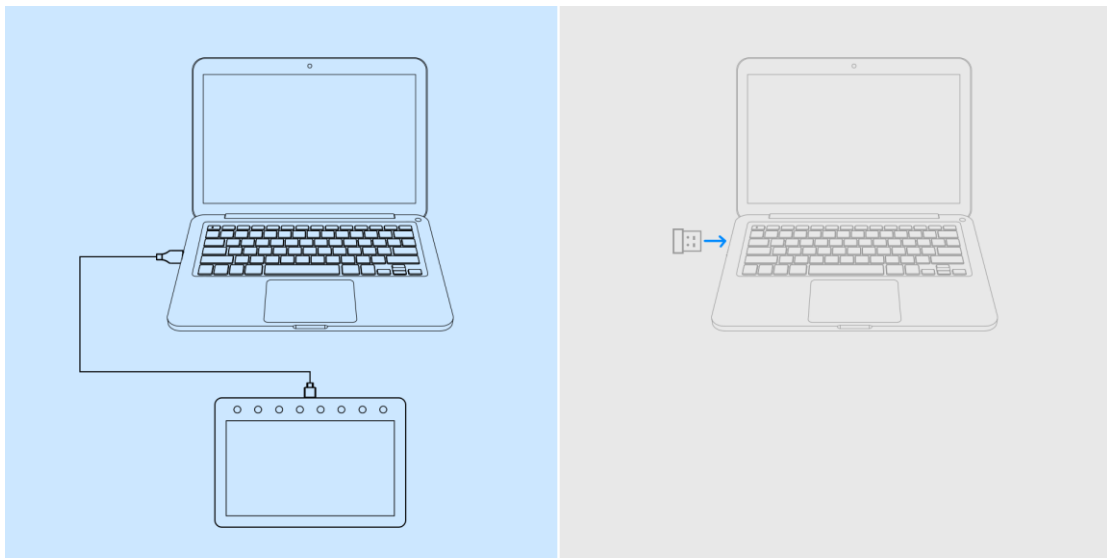


image2 -- Tablet connected to the computer

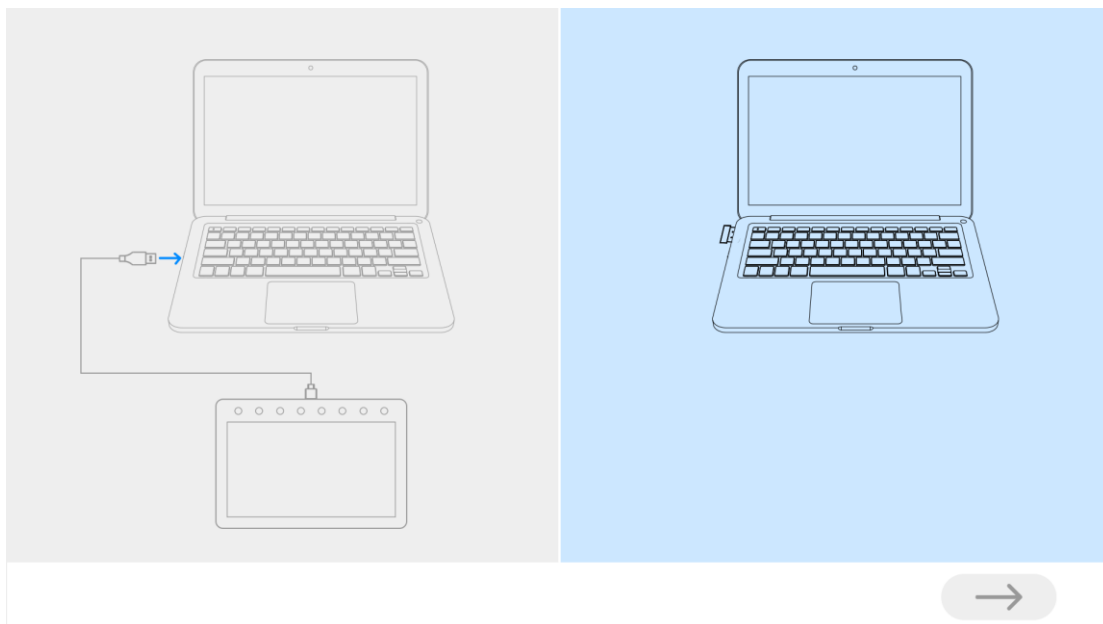


image3 -- Wireless receiver plugged into the computer

Step 2: click the blue arrow for pairing (about 2 seconds)

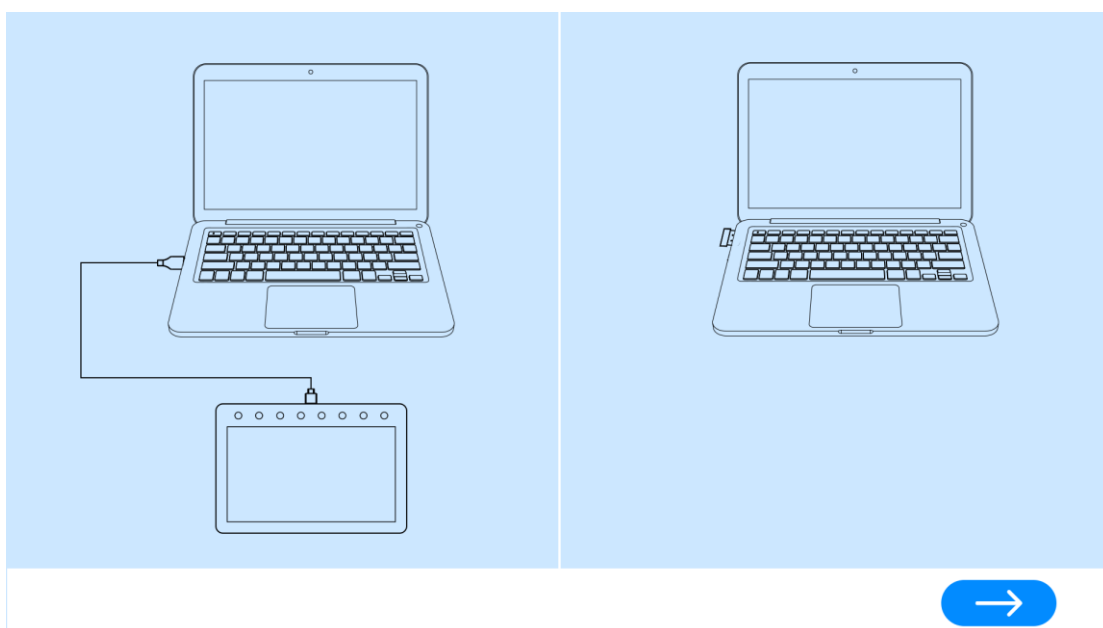


image4 -- Tablet and wireless receiver connected to the computer at the same time

Step 3: Once the pairing is successful, unplug the USB cable and the wireless receiver, and then replug the wireless receiver and restart the tablet.

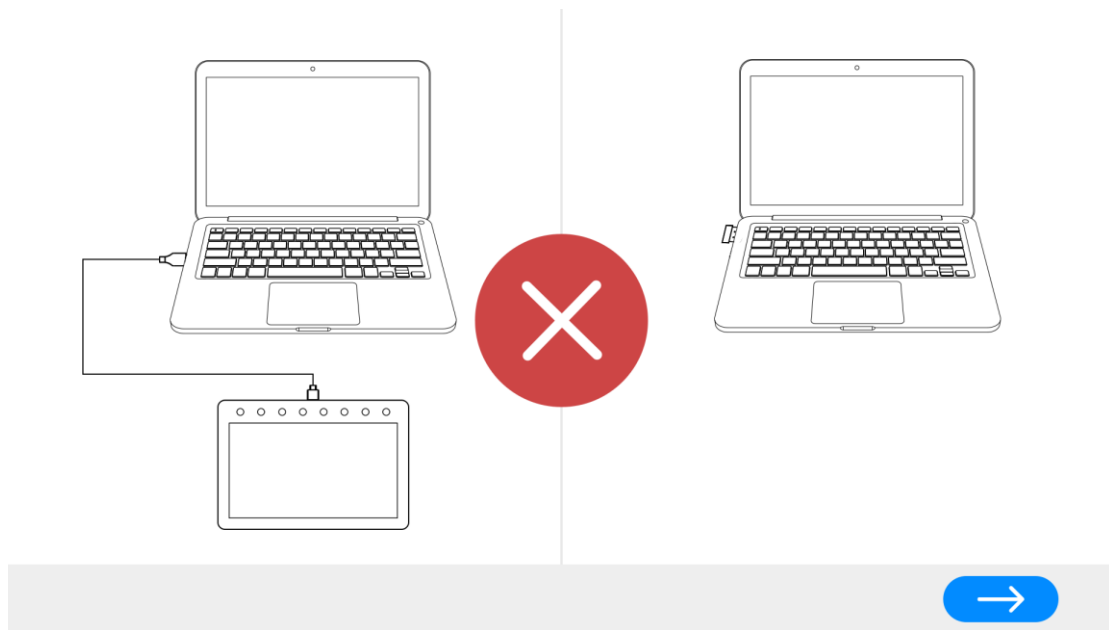


image 5 -- Pairing failed, repairing

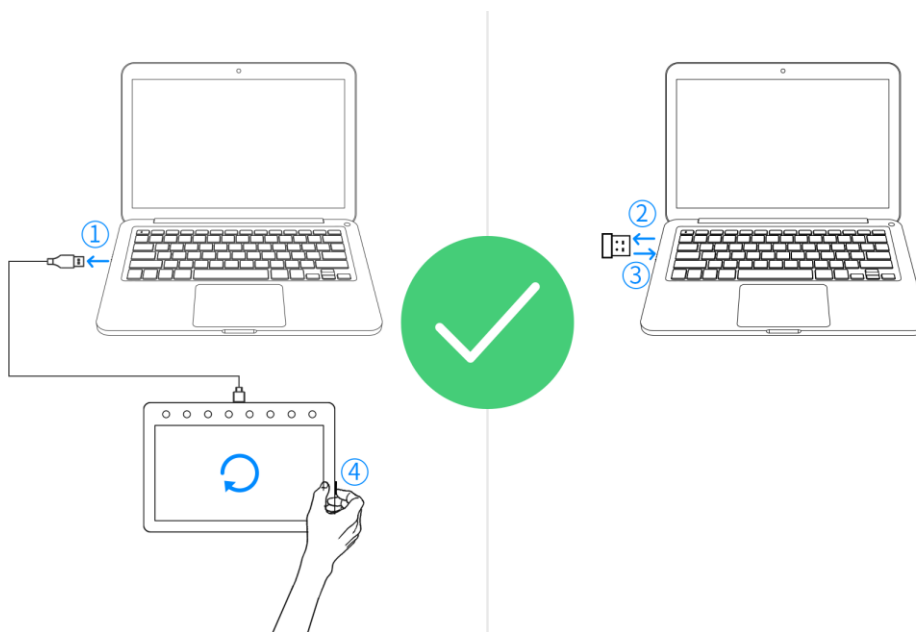


image 6 -- Pairing successful

1. Unplug the USB cable
2. Unplug the wireless receiver
3. Replug the wireless receiver
4. Restart the pen tablet