

# Driver User Manual

## Graphcis tablet and display driver

## Safety Precautions



This manual uses the following symbols to ensure that the XP-PEN Tablet is used correctly and safely. Be sure to read and observe the Safety Precautions.

Do not use this product in a control system area that requires a high degree of safety and reliability.

In such a system, this product could negatively affect other electronic devices and could malfunction due to the effect of those devices.



Turn the power off in areas where use of electronic devices is prohibited.

Turn the power off your tablet when onboard an aircraft or in any other location where use of electronic devices is prohibited, otherwise it may negatively affect other electronic devices in the area.



Unplug the USB connector from this product and turn the power off.

Keep the product away from infants and young children.

Accessories to this gadget may present a choking hazard to small children. Keep all accessories away from infants and young children.



### CAUTION

Do not place this product on unstable surfaces.

Avoid placing this product on unstable, tilted surfaces or any locations exposed to excessive vibrations.

This may cause the tablet to fall or impact surfaces which can result in damage and/or malfunction to the tablet.



Do not place heavy objects on top of this product.

Do not place heavy objects on the product. Do not step on, or place your body weight on this product as this may cause damage.



Avoid extreme high or low-temperature exposure to the XP-Pen tablet.

Do not store this product in areas that drop below 5°C or above 40°C. Avoid locations with excessive temperature fluctuations. This may result in damage to the product and its components.



Do not disassemble

Do not disassemble or modify this product. Doing so may expose you to heat, fire, electric shock and injury. Disassembling the product will void your warranty.

Do not use alcohol for cleaning

Never use alcohol, thinner, benzene or other mineral solvents that may discolor and cause deterioration to the product.



Do not expose to water

Be cautious of water and all liquids that may be near the tablet. Exposure to water or liquid could damage the product.



### CAUTION

Avoid placing metallic objects and especially magnetic objects on the tablet.

Placing metallic and/or magnetic objects on this product during operation may cause malfunction or permanent damage.



Do not strike the pen against hard objects.

Striking the pen against hard objects can cause damage to the pen.

Avoid gripping the pen too tightly, and DO NOT use excessive weight/pressure on the Express Key button and pen.



The stylus pen is a high-precision instrument. Avoid pressing too tightly on the Express Key button, and keep any objects from covering the pen to avoid potential damage. Keep the pen away from areas of high dust, contaminants, or any particulate matter that can effect or damage the pen.

## Limitation of Liability

1. XP-Pen shall in no event be liable for damages resulting from fires or earthquakes, including those caused by third parties and those arising from user misuse, abuse or neglect.
2. XP- Pen shall in no event be liable for incidental damages- including but not limited to loss of business income, interruption of business activities, corruption or loss of data – that arise from use or failure to use this product correctly.
3. XP- Pen shall in no event be liable for damage resulting from uses not documented in this manual.
4. XP- Pen shall in no event be liable for damages or malfunction arising from the connection to other devices or use of third party software.

# Contents

## I. Driver interface

## II. Install the driver

Windows

Mac

## III. Driver functions

Functions introduction

## IV. Remove the driver

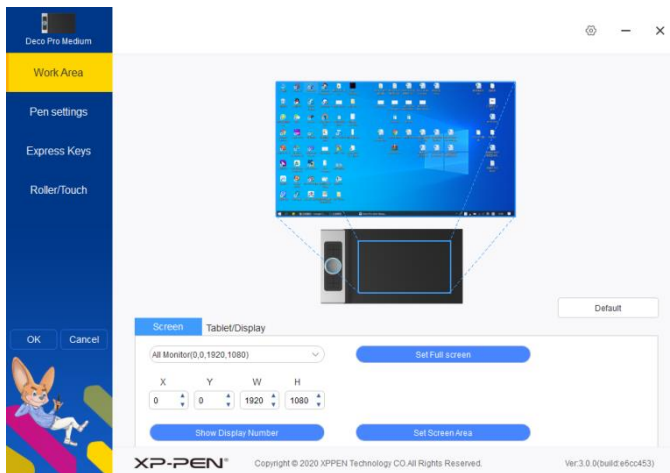
Windows

Mac

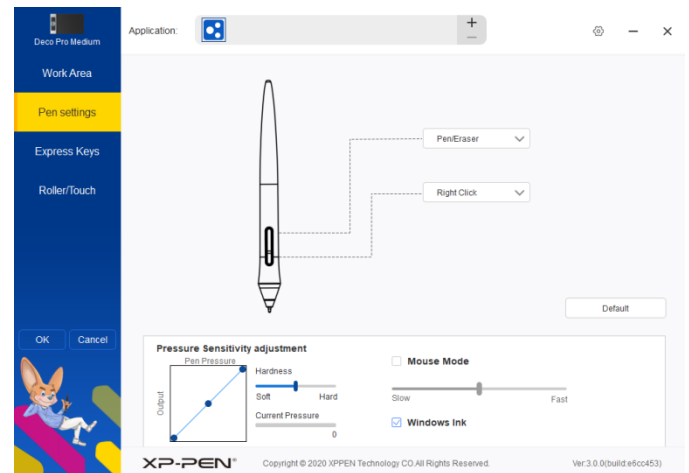
## V. Q&A

Thank you for purchasing the XP-Pen tablet. Our product user manual currently supports English, Japanese, German, Korean, Chinese, Italian, French, Spanish and Portuguese. We apologize if your preferred language is not supported.

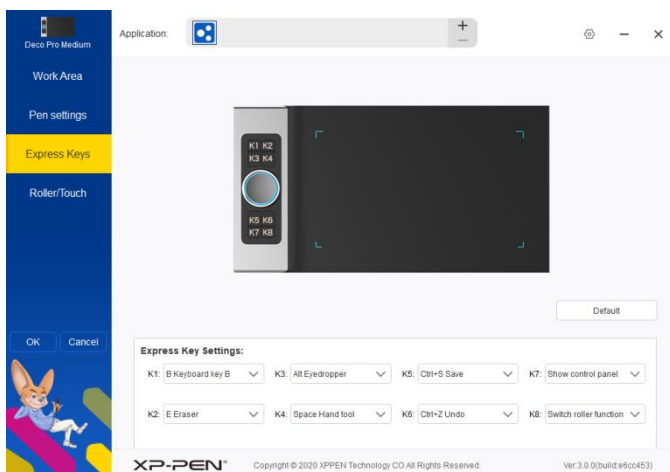
## { I. Driver interface }



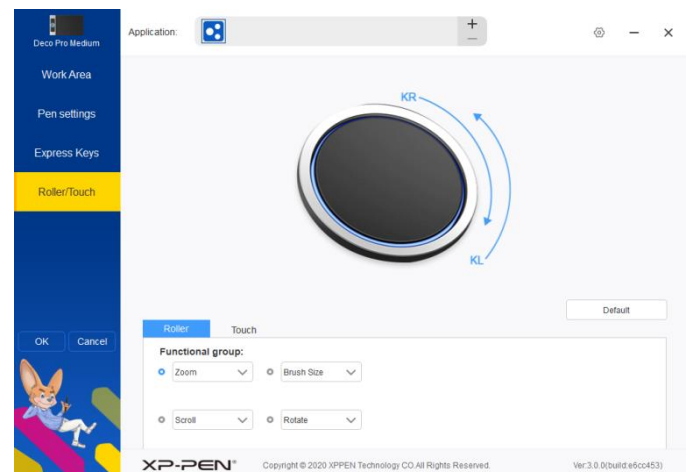
Set the work area of tablet and screen



Set pen key and pressure



Set tablet key



Set roller / touch function

## { II. Install the driver }

**Supported operating systems:**

Windows 10, 8 or 7

Mac OS X 10.10 or above

## Notes:

1. Before installation, please temporarily turn off the anti-virus software and firewall and close all opened software.
2. If the computer has already installed other tablet drivers, please remove the relevant drivers and restart the computer before install the driver you have downloaded.

## Install:

Connect the USB cable to Deco Pro small & medium and the USB port of the computer.

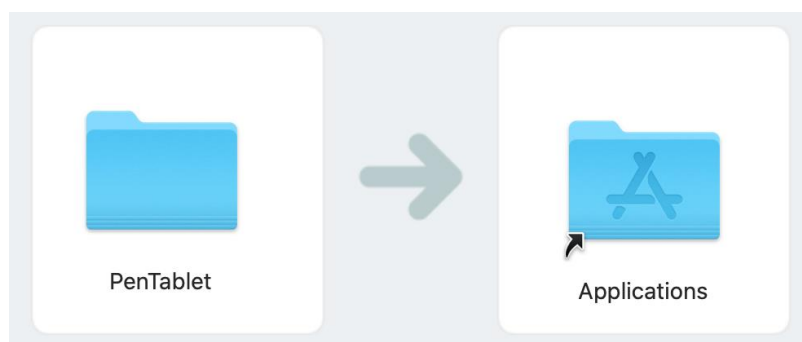
From XP-Pen official website([www.xp-pen.com](http://www.xp-pen.com))download the latest driver according to the model you purchased.

## Windows:

1. After the download is complete, please unzip the folder and run the".exe"file.
2. Follow the instructions until the installation is complete.

## Mac:

1. After the download is complete, please unzip the folder and run the".dmg"file.
2. Left click to select the Pentable file and drag it to applications.



3. Mac OS(For 10.14 and above): The driver needs to be added to the system white list. After the user has successfully installed the driver, the system will pop up a prompt to guide the user to carry out relevant operations, At this time, you need to check "msdisplay", "pentabletdriverux", "pentabletsetting" and "ugepentabletinfo" in the security and privacy interface. You can also

manually select the corresponding option and check it in the system preference > security and privacy> privacy>assistance.

After the driver is installed, it is recommended to restart the computer, then connect the tablet to the computer and make sure that the pen can operate the cursor normally. Open the tablet driver interface, set and test whether the pen pressure is available.

## { III. Driver functions }

### Save settings:

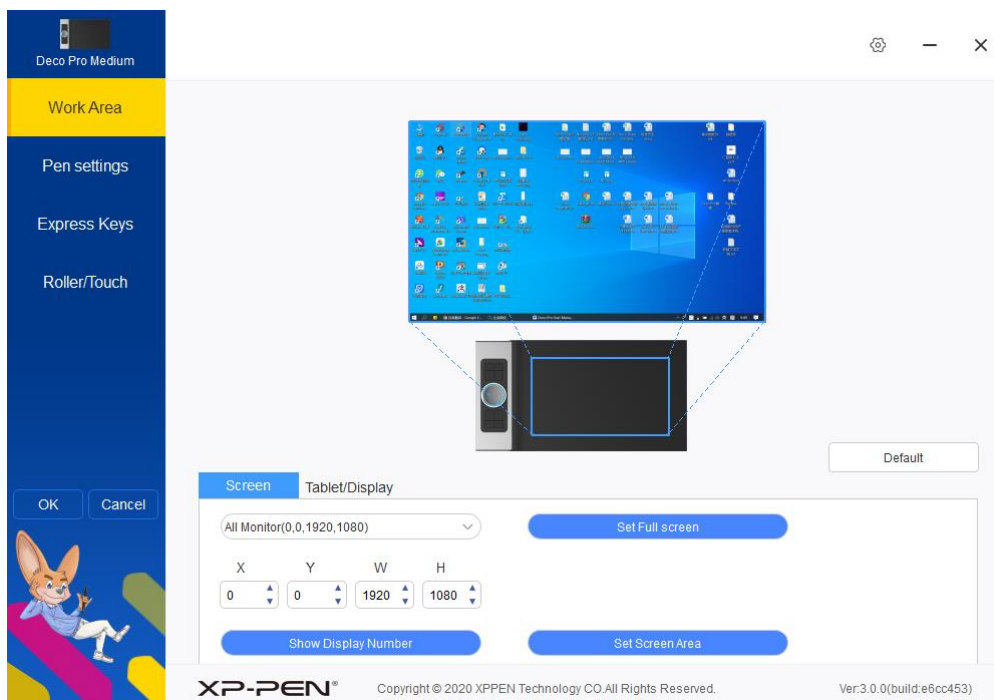
Please click the "OK" button on the left side of the driver page to save the settings after changing the configuration. If the settings are saved successfully, you will be prompted "configuration is saved successfully" at the bottom of the screen.

### Restore default settings :

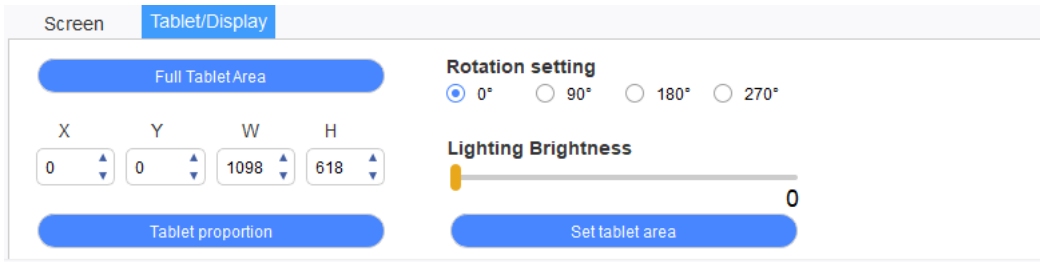
Restore all settings on this page to their default values.

### Functions introduction:

#### 1. Work area



## 1.1 Tablet/Display



### Full Tablet Area:

Put the work area of the tablet to the maximum.

### Tablet proportion:

Scale the work area of the tablet to the same scale as your screen.

### Set tablet area:

Manually set the size of the work area of the tablet, and use the pen to click the "upper left corner" and "lower right corner" positions to be selected.

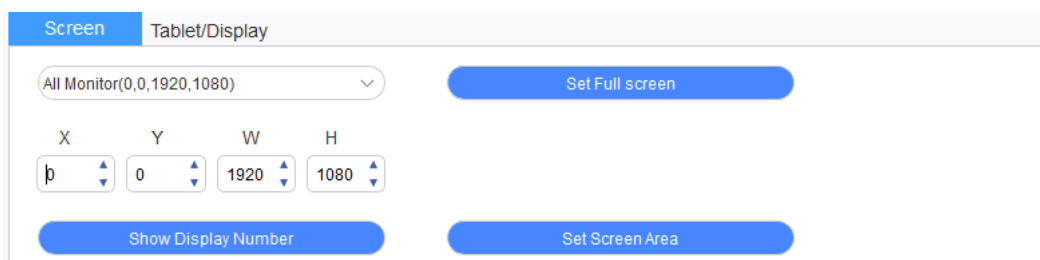
You can set the work area of the tablet by dragging the pen on the work area diagram of the tablet in the drive, or you can determine the size of the work area of the tablet in the corresponding input box under X,Y,W,H according to the value you enter.

### Rotation setting:

The tablet can be set to 0,90,180,270 degrees. When you have finished setting, you should also rotate the tablet to the corresponding direction.

**Rotate 180 degrees for left-hand mode.**

## 1.2 Screen



When connecting one or more monitors, you can choose to set the projection screen of the workarea of the tablet to use a single monitor or all monitors.

### **Set Screen Area:**

Use the pen to set the screen area manually. First set the first position (top left) of the work area with a pen, and then set the second position (bottom right).

You can use pen to set the projection screen area by dragging the projection screen diagram in the driver. You can determine the size of the corresponding screen area of the tablet work area in the corresponding input box below X,Y,W,H according to the value you enter.

### **Set Full screen:**

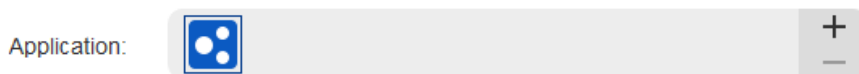
Put the screen area corresponding to the work area of the tablet to the maximum.

### **Show Display Number:**

Identify all connected monitors and the digital ID will be displayed in the lower left corner of each monitors.

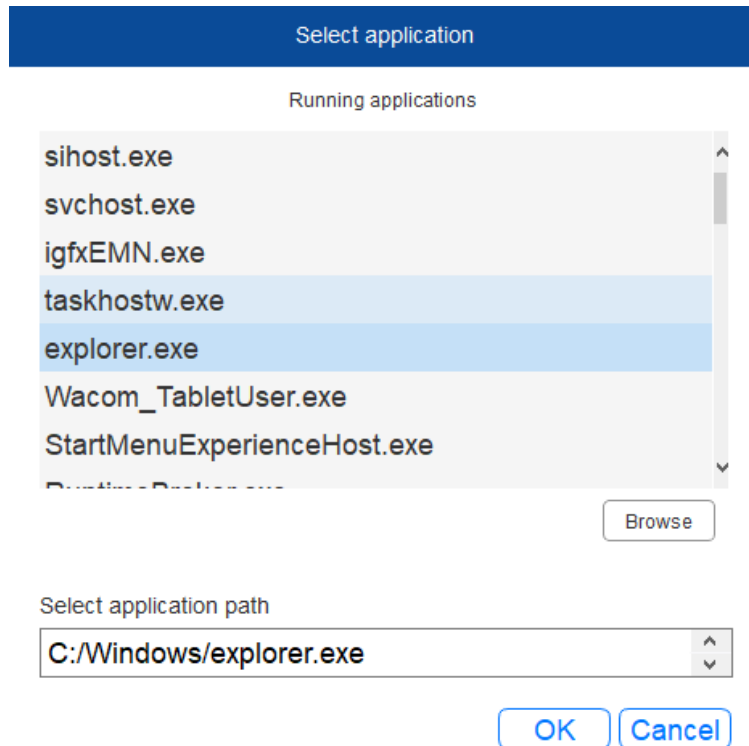
## **2. Application**

On the pen settings page, express keys page, roller / touch page, you can set the key function or roller/ touch function you want for this application after selecting the application.



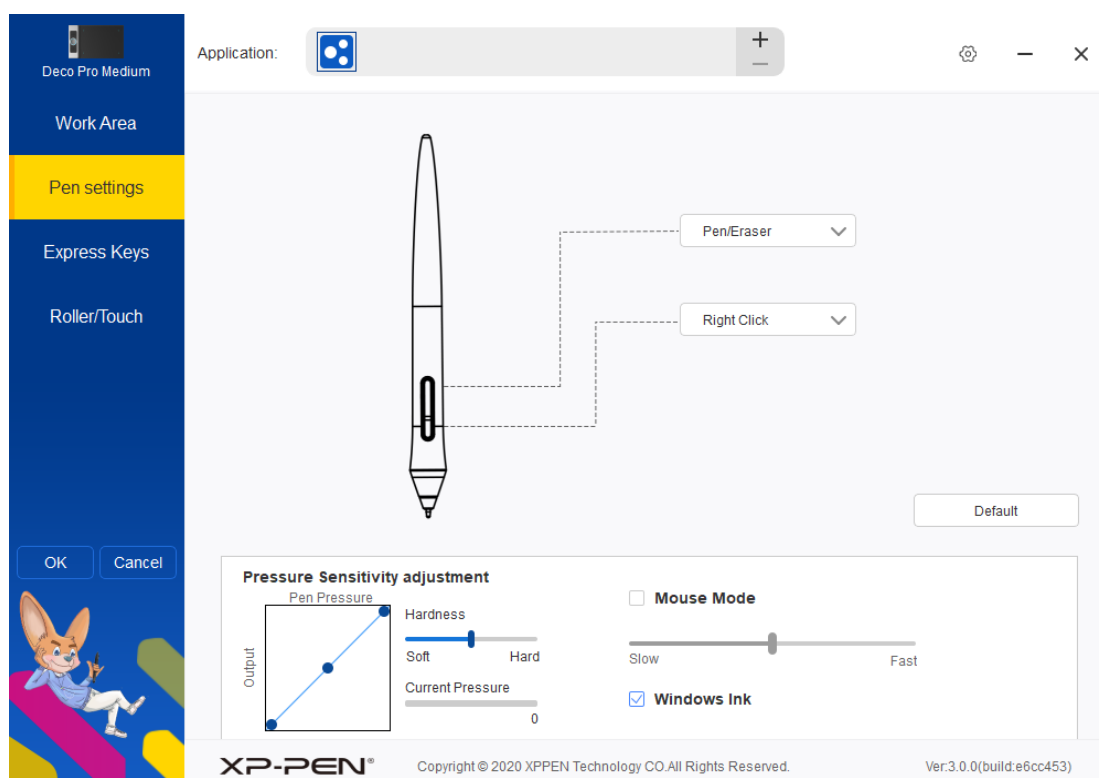
- a. Click "+" on the top right of the application bar to open the application selection interface.
- b. Select the application to be added from the running applications or click the Browse button to select the application to be added; after selecting the application, the path of the selected application will be displayed at the bottom.





- c. Click the "OK" button at the bottom of the page, and the application just selected will be added to the application bar.
- d. When you return to the express keys page, select application and set the express key function you want to change.
- e. Click the "OK" button on the left side of the driver page to save the currently modified settings.

### 3. Pen settings



**Pen button:**

Set the function of the pen button here. When you select the drop-down function list, you can use "customize" to set the function of the pen button.

**Note:**

When the pen is in the range of the tablet work area, press the button set as pen / eraser on the pen to switch between pen and eraser mode. When switching other functions of the pen button, the current switching mode will be displayed at the bottom of your screen.

**Pressure sensing regulation:**

The sensitivity of the pen pressure can be adjusted by adjusting the "output" and "pen pressure" curves or by moving the slider on the progress bar.

The current pressure can test the pen pressure you are exerting.

**Mouse mode:**

The mouse is preset to use absolute mode. Check here to use relative mode. The speed of the mouse can be adjusted after selection.

**Absolute mode (pen mode):** This is the standard tablet mode. Absolute mode is that each point of the tablet's work area corresponds to an absolute point on your monitor.

**Relative mode (mouse mode):** this mode operates as a standard mouse.

**Windows Ink:**

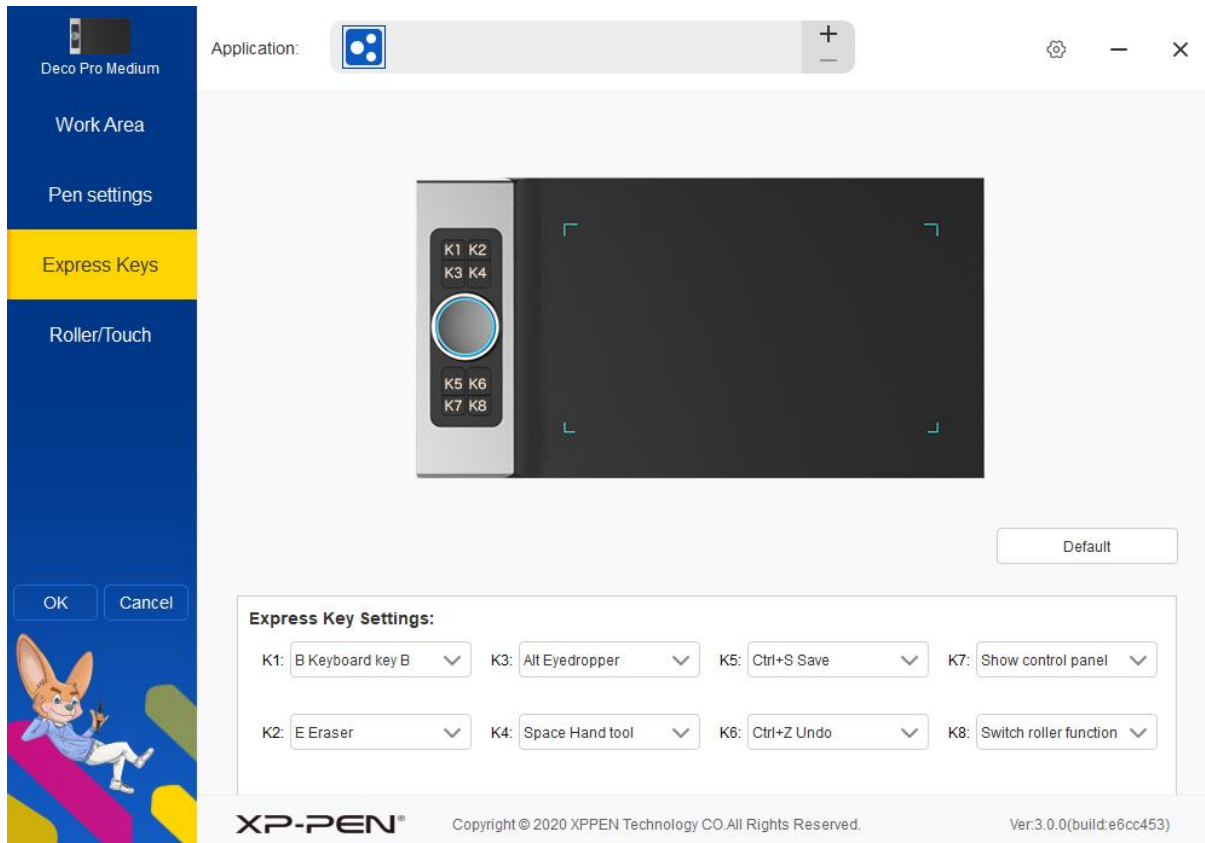
Some drawing software can support Windows ink pen pressure. You can check or cancel "windows ink" to turn this function on or off ,It is turned on by default.

**4. Express keys**

To use the express key of the tablet, set the input method to English mode. Setting to another language mode may not function correctly.

The express key of the tablet is the command key of Photoshop as the default value. You can customize express keys according to your personal needs.

It is recommended that you set one of the express keys to switch roller or touch function.

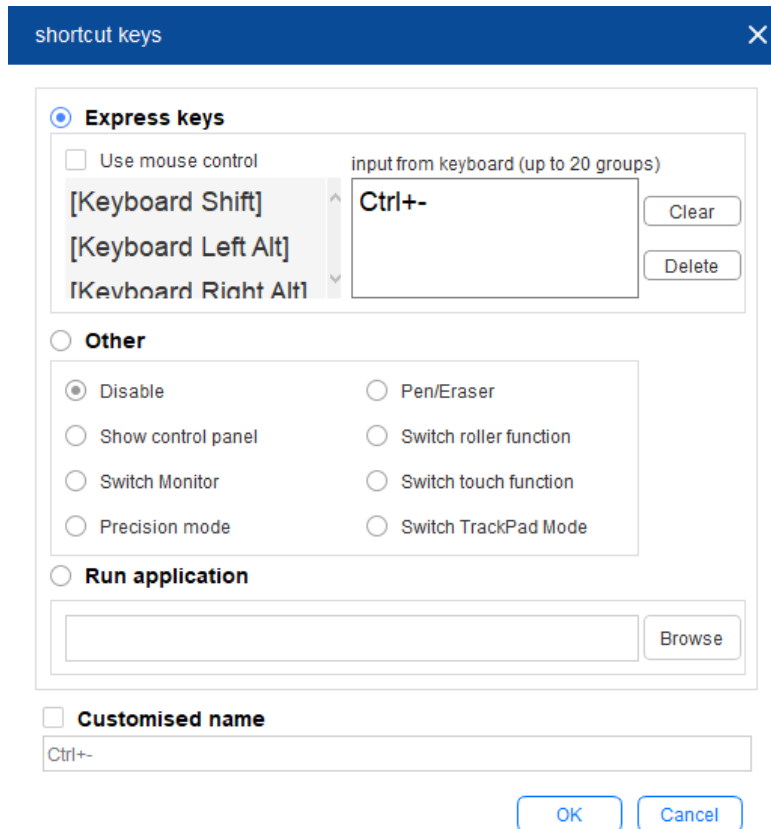


Select “customize” in the drop-down function list to customize the function of each express key; select “input from keyboard” in the customization function to customize the function of composite key.

### **input from keyboard:**

You can configure keyboard express here. With the mouse, you can use functions such as rotation in 3D drawing software. For example, in 3D Max software, you can set a key on the tablet to “Alt”, and with the middle mouse, you can rotate the view.

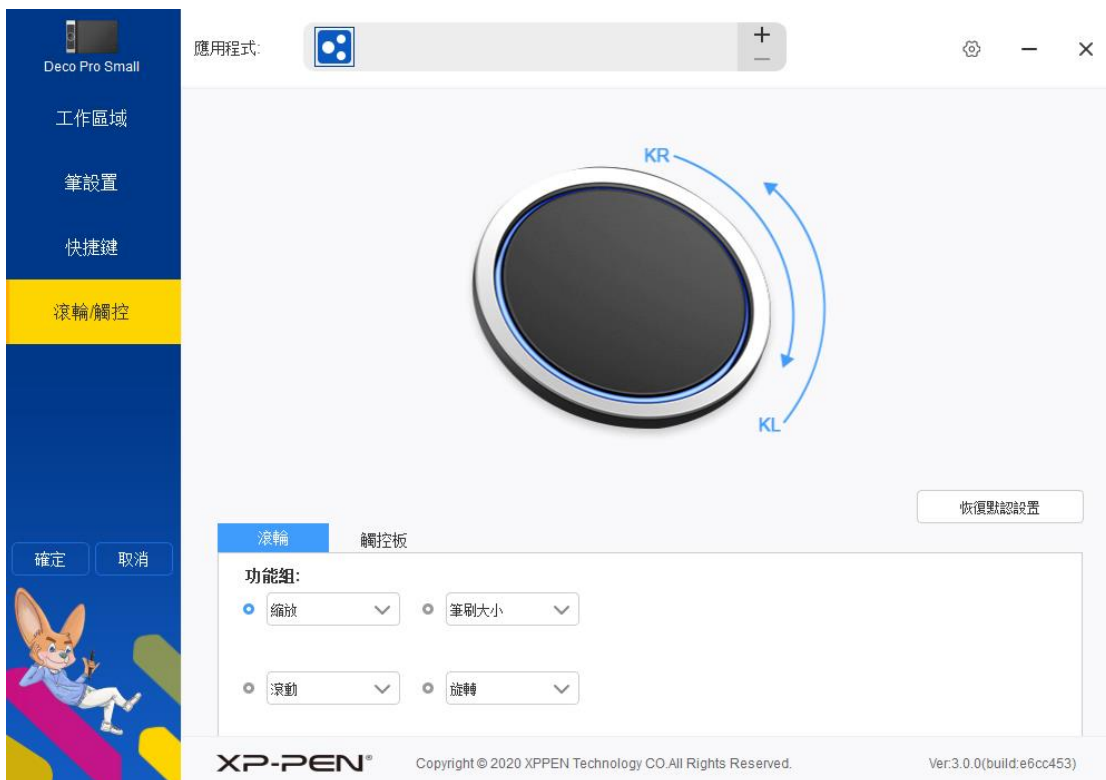
Multiple groups of keyboard express can be set here. When you press the key set as this group of shortcuts, all the express functions you set will run once.



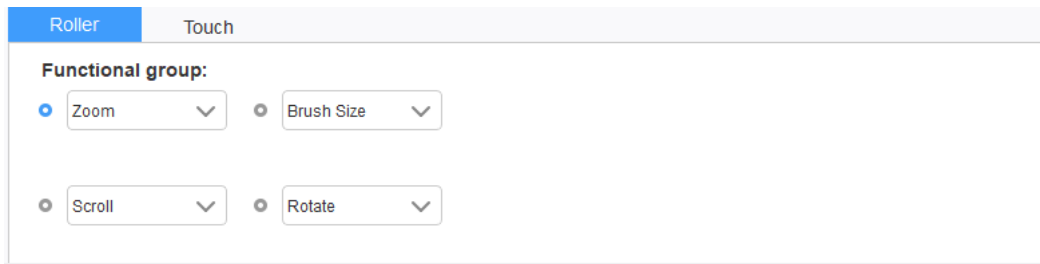
**Note:**

Precision mode is to limit the work area of the tablet to a small range. This function allows you to make more detailed drawings for some areas.

**5. Roller/Touch**



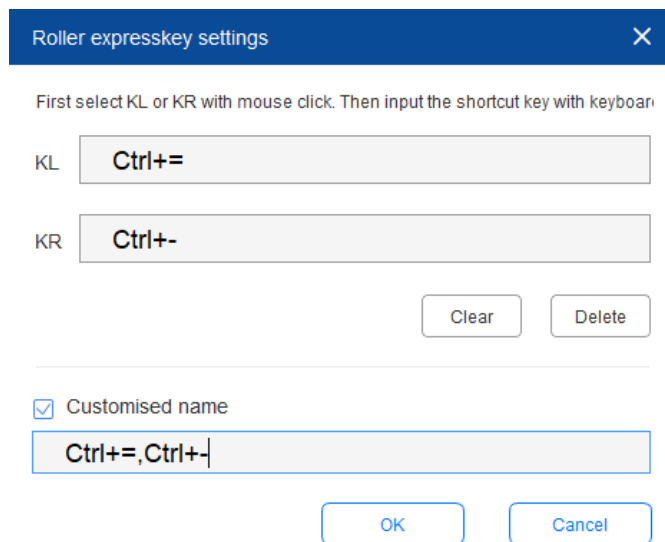
## 5.1 Roller



Select the function you want to use from the four groups of functions provided by default; when checked, you can customize this function or set it to disable.

### Customize:

In custom settings, you can set the compound key corresponding to KL and KR respectively and use custom naming.

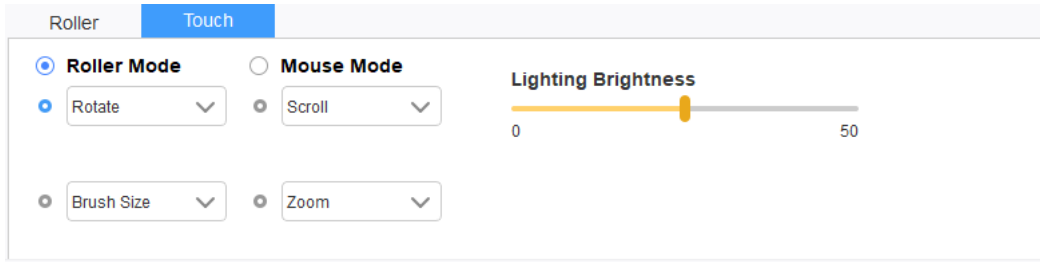


## 5.2 Touch

You can set the touchpad to “Mouse mode” or “Roller mode”.

### Roller mode:

Select the function you want to use from the four groups of functions provided by default; when checked, you can customize this function or set it to disable.

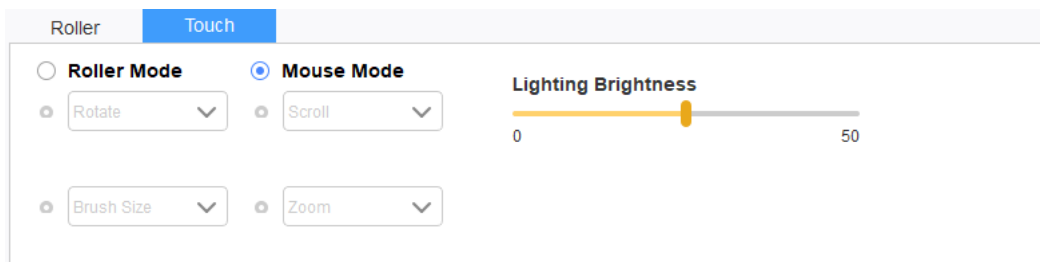


### Customize:

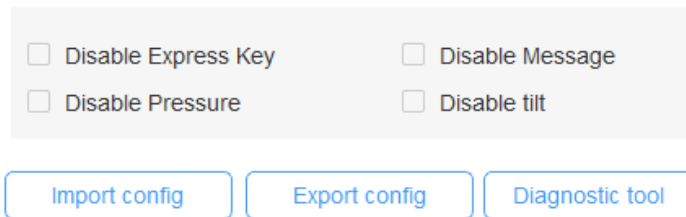
In custom settings, you can set the compound key corresponding to KL and KR respectively and use custom naming.

### Mouse mode:

The touchpad can be used as a mouse.



## 6. settings



### Disable express keys:

When you enable it, all of the express keys function will be disabled.

### Disable message:

When you enable it and press any express key, the message will not popup on the bottom of your monitor.

### Disable pressure:

You will not feel the pressure when using the pen.

### Disable tilt:

Disable the tilt effect of the pen.

**Diagnostic tool:**

Diagnostic tools can be used when problems arise during the use of the drive.

**Import&Export config:**

Use Import&Export configuration to store and read the set value of the set function.

**Note:**

When functions have changed, please click the "OK" button on the left side of the drive page to save the settings, and then select the storage location to save your settings through the "export profile" function.

## { IV. Remove the Driver }

You can use the following methods to uninstall the digital board driver.

**Windows**

In the Start menu, open [Settings] → [Apps&features]. Find "Pentablet" and click "Uninstall". Follow the on-screen instructions.

**Mac**

Open [Finder] → [Application] → [PenTablet], then click "Uninstall PenTablet" and follow the on-screen instructions.

**Note:**

When you attempt to reinstall the driver, be sure to reboot your computer after the uninstall is complete.

# { V. Q&A }

## **1. I can't use the pen to control the cursor.**

- a. If so, please uninstall the driver and restart the computer. After the computer is powered on, please make sure that your tablet is properly connected to the computer and test whether you can use the pen to control the cursor (make sure that your computer's login account is the highest user license Administrator).
- b. If you can control the cursor normally, please download the latest driver from xp-pen official website. Please close the antivirus software and unzip it after downloaded.
- c. Windows: Open the folder and run ". exe" until the installation is complete.
- d. Mac: Open the folder and run ". dmg" until the installation is complete.

## **2. How do I determine if a Problem is software or hardware related?**

Please try to connect the tablet to different computers and test whether it is normal. If other computers can be used normally, the problem should be in the drawing software (please try to uninstall all the tablet/display drivers) and restart the computer, then install the tablet drive again until it is finished.

**If you have any questions, please contact us at:**

**Web: [www.xp-pen.com](http://www.xp-pen.com)**

**Email: [service@xp-pen.com](mailto:service@xp-pen.com)**