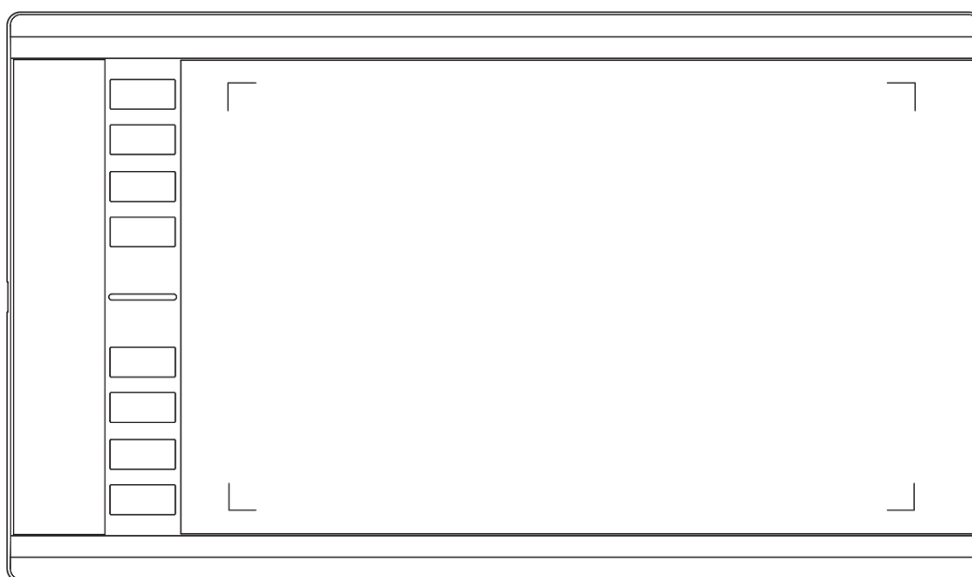


Graphic Pen Tablet

Star 03 Manual

Windows 10,8,7 and Mac 10.8 or above



Safety Precautions

This manual uses the following symbols to ensure that the XP-PEN Tablet is used correctly and safely. Be sure to read and observe the Safety Precautions.



Do not use this product in a control system area that requires a high degree of safety and reliability.

In such a system, this product could negatively affect other electronic devices and could malfunction due to the effect of those devices.



Turn the power off in areas where use of electronic devices is prohibited.

Turn the power off your tablet when onboard an aircraft or in any other location where use of electronic devices is prohibited, otherwise it may negatively affect other electronic devices in the area.

Unplug the USB connector from this product and turn the power off.



Keep the product away from infants and young children.

Accessories to this gadget may present a choking hazard to small children. Keep all accessories away from infants and young children.



CAUTION

Do not place this product on unstable surfaces.

Avoid placing this product on unstable, tilted surfaces or any locations exposed to excessive vibrations. This may cause the tablet to fall or impact surfaces which can result in damage and/or malfunction to the tablet.

Do not place heavy objects on top of this product.

Do not place heavy objects on the product. Do not step on, or place your body weight on this product as this may cause damage.



Avoid extreme high or low-temperature exposure to the XP-Pen tablet.

Do not store this product in areas that drop below 5°C or above 40°C. Avoid locations with excessive temperature fluctuations. This may result in damage to the product and its components.



Do not disassemble

Do not disassemble or modify this product. Doing so may expose you to heat, fire, electric shock and injury.

Disassembling the product will void your warranty.



Do not use alcohol for cleaning

Never use alcohol, thinner, benzene or other mineral solvents that may discolor and cause deterioration to the product.



Do not expose to water

Be cautious of water and all liquids that may be near the tablet. Exposure to water or liquid could damage the product.



CAUTION



Avoid placing metallic objects and especially magnetic objects on the tablet.

Placing metallic and/or magnetic objects on this product during operation may cause malfunction or permanent damage.



Do not strike the pen against hard objects.

Striking the pen against hard objects can cause damage to the pen.



Avoid gripping the pen too tightly, and DO NOT use excessive weight/pressure on the Express Key button and pen.

The stylus pen is a high-precision instrument. Avoid pressing too tightly on the Express Key button, and keep any objects from covering the pen to avoid potential damage. Keep the pen away from areas of high dust, contaminants, or any particulate matter that can effect or damage the pen.

Limitation of Liability

1. XP-Pen shall in no event be liable for damages resulting from fires or earthquakes, including those caused by third parties and those arising from user misuse, abuse or neglect.
2. XP-Pen shall in no event be liable for incidental damages- including but not limited to loss of business income, interruption of business activities, corruption or loss of data – that arise from use or failure to use this product correctly.
3. XP-Pen shall in no event be liable for damage resulting from uses not documented in this manual.
4. XP-Pen shall in no event be liable for damages or malfunction arising from the connection to other devices or use of third party software.

Contents

[I. Product Overview](#)

[Overview](#)

[Active area orking area](#)

[II. Stylus](#)

[Overview](#)

[Pen tip replacement](#)

[III. Driver Installation](#)

[Windows](#)

[Mac](#)

[IV. Driver Settings UI](#)

[Windows](#)

[Mac](#)

[V. Driver Uninstallment](#)

[Windows](#)

[Mac](#)

[VI. FAQ](#)

{ I. Product Overview }

Overview

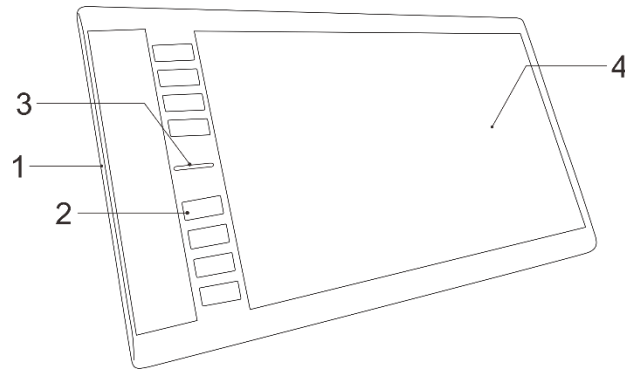


Image 1-1: Overview

- (1). USB port
- (2). Express keys
- (3). Status indicator light
 - a. Blinking: Stylus is in range, but not touching the work area.
 - b. Solid: Stylus is touching the work area.
 - c. No light: Stylus is out of detection range.
- (4). Active work area

Active area

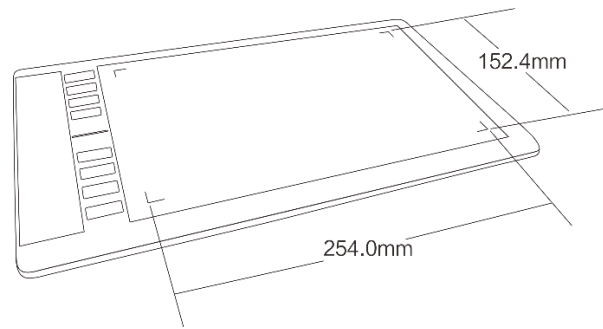


Image 1-2: Active area

{ II. Stylus }

Overview

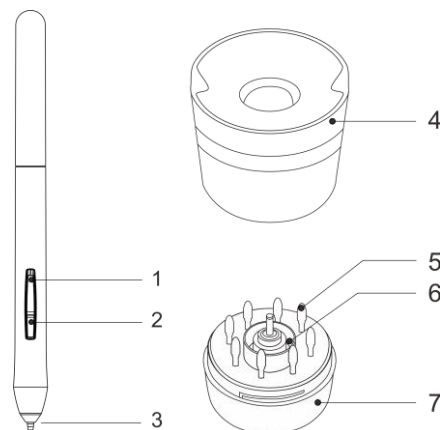


Image 2-1: Stylus and accessories

- (1). Barrel button 2
- (2). Barrel button 1
- (3). Pen tip
- (4). Pen stand (Top)
- (5). Replacement pen tips
- (6). Pen clip
- (7). Pen stand (Bottom)

NOTES:

- a. **Barrel button functions can be customized in the tablet's driver settings.**
- b. **Stylus does not use a battery or require charging.**

Pen tip replacement

- (1). Hold the upper half of the pen stand and twist counterclockwise to remove it.
- (2). Remove the pen clip located in the center of the lower pen stand.
- (3). Use the pen clip to grip the pen tip and pull it out of the stylus.
- (4). Push the new pen tip into the stylus.

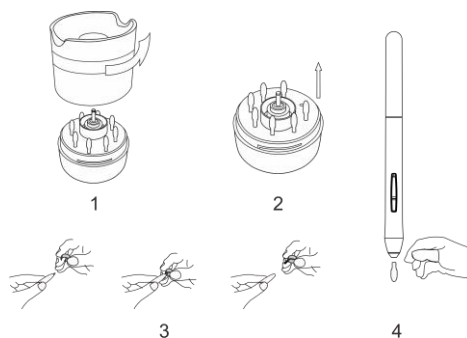


Image 2-2: Replacing the pen tip

{ III. Driver Installation }


Supported operating systems:

Windows 10, 8, or 7
Mac OS X 10.8 or above

NOTES :

- (1). **Disable any antivirus or firewall software and close any non-essential background software before beginning the installation. Some software, such as OneDrive and Dropbox, may monopolize important files and prevent a successful installation. On a Windows operated computer, check the system tray on the bottom-right of the screen and close any software unrelated to your computer hardware.**
- (2). **Uninstall any existing tablet software before attempting to install the Star 03 driver. Other tablet drivers will conflict with the Star 03 driver or prevent installation entirely.**
- (3). **Please download the latest driver version from the XP-Pen website (www.xp-pen.com) and be sure to extract the ".zip" file contents before running ".exe" or ".pkg."**

Windows

- (1). Connect the Star 03 to your computer with the included USB cable.
- (2). Download the Star 03's latest driver from the support section of our website, www.xp-pen.com
- (3). Extra the ".zip" file contents before running ".exe".
- (4). After a successful installation, the driver's icon () will appear in your system tray and on your desktop. If the icon is not present, uninstall the driver, reboot, and repeat step 2.

Mac

- (1). Connect the Star 03 to your computer with the included USB cable.
- (2). Download the Star 03's latest driver from the support section of our website, www.xp-pen.com
- (3). Extra the ".zip" file contents before running ".pkg".



Image 3-1: Mac driver

(4). If you run into the error message below, please complete the following steps.

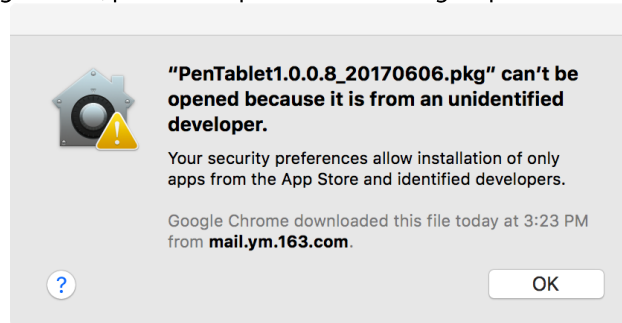


Image 3-2: unidentified developer

a. Open "System Preferences," then "Security & Privacy."

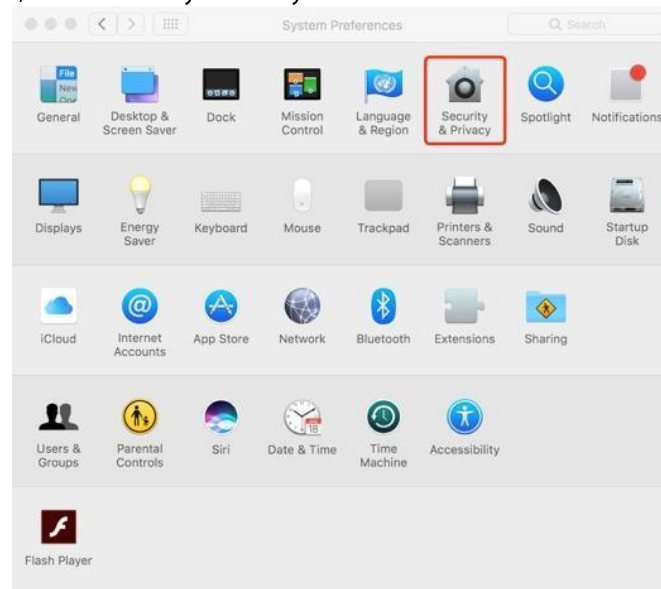


Image 3-3: Security & Privacy

b. Click "Open Anyway."

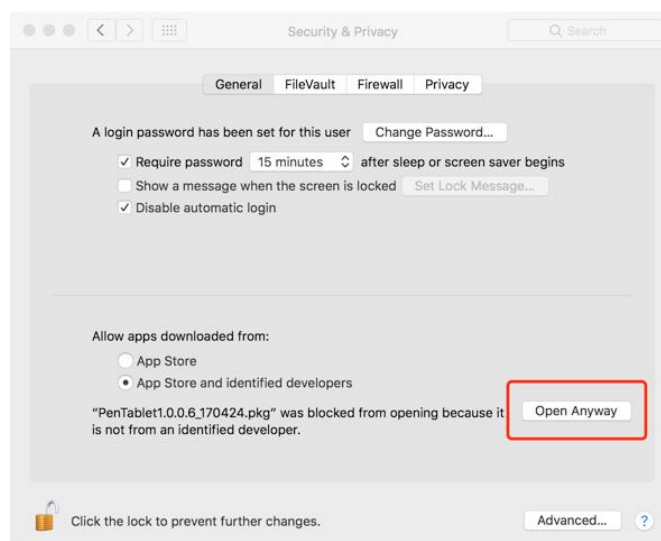


Image 3-4: Open Anyway

c. Input your username and password, then click "Unlock."

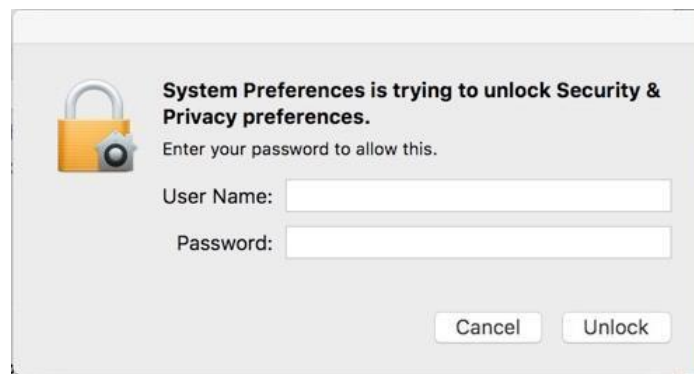



Image 3-5: Password

{ IV. Driver Settings UI }

Windows

The Star 03's driver settings can be opened in two ways:
Double-click the driver's icon () in system tray or your desktop.

Driver UI

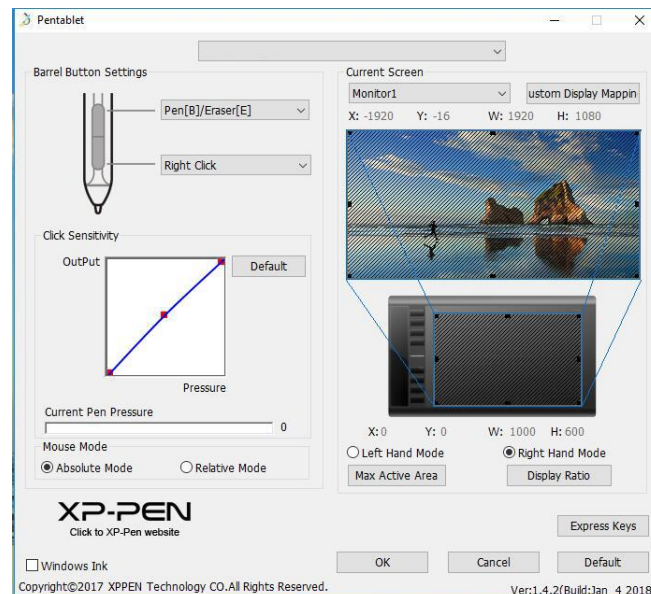


Image 4-1: UI

1.1. Pen Function Settings

You may customize the functions of your tablet pen's barrel buttons here. Use the "Function Key" option to program custom keystrokes.

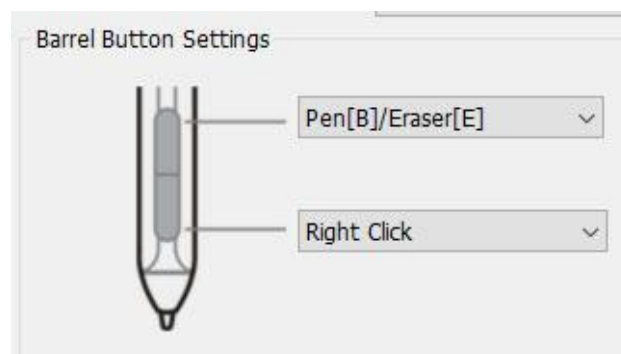


Image 4-2: Pen Functions Setting

Note:

Pen/Eraser Toggle

With the stylus in range of the Star 03's working area, press the assigned barrel button to toggle between pen and eraser modes in compatible drawing software. The current mode will briefly be displayed on your monitor.

1.2. Click Sensitivity & Current Pen Pressure

You can adjust pen pressure to “Output” or “Press” sensitivity on here.

Current Pen Pressure shows the current pressure level being exerted on your tablet and can be used to test pen pressure.

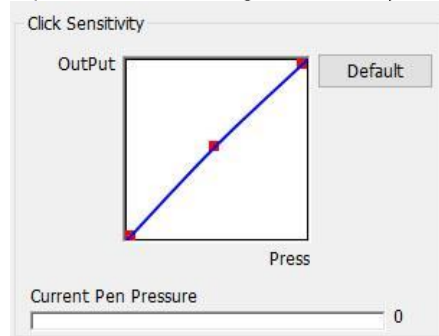


Image 4-3: Click Sensitivity & Current Pen Pressure

1.3. Current Screen

The Star 03 may be configured for use with single or dual monitors.

And the dimensions of your tablet's on-screen work area can be changed here.

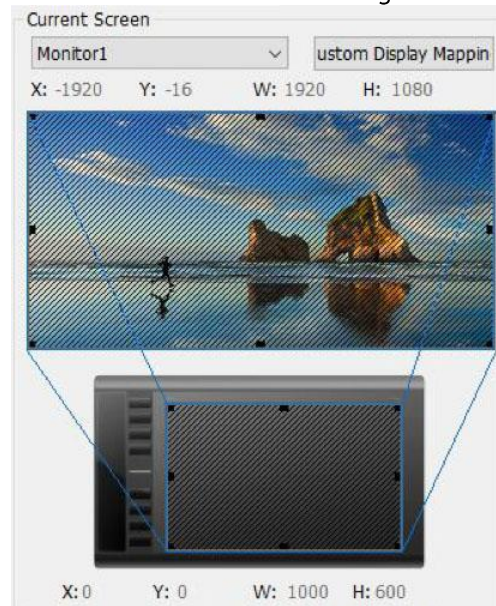


Image 4-4: Current Screen

1.4. Mouse Mode

Absolute (Pen) Mode: Standard tablet mode; Each point of the tablet's work area corresponds to an absolute point on your computer display.

Relative (Mouse) Mode: Mouse mode; The tablet's work area does not correspond to absolute points on your computer display and your pen works as a standard mouse.



Image 4-5: Mouse Mode

1.5. Windows Ink

Windows Ink capability can be toggled on and off here. Enabling this will allow support for Windows Ink and applications that run using Windows Ink.



Image 4-6: Windows Ink

1.6. Right/Left Hand Mode & Max Active Area/Display Ratio

The Star 03 are set up for right-handed use by default. When switching to left-handed mode, be sure to rotate the actual physical tablet 180 degrees to place its shortcut keys on its opposite side.

Max Active Area & Display Ratio

You can set your Star 03 work area to the max or adjusts the tablet's on-screen working area to match your monitor's resolution.

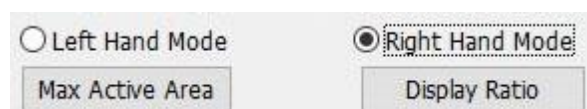


Image 4-7: Right/Left Hand Mode & Max Active Area/Display Ratio

1.7. Express Keys Setting

Notes:

(a). The Star 03's express keys are designed to work with US English keyboards. Keys may not function correctly with other keyboard languages.

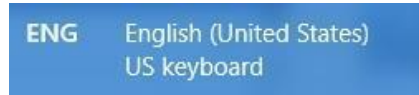


Image 4-8: Keyboard

(b). By default, the Star 03's express keys are mapped to standard Photoshop keyboard shortcuts. Keys can be customized to function efficiently in other software.

In this tab, you may edit the functions of the Star 03's shortcut keys. Use the "Definition" option to program custom keystrokes.

Disable express keys: When you enable it, all of the express keys function will be disabled.

Hide Hints: When you enable it, and click any express keys the message will not popup on the bottom of screen.

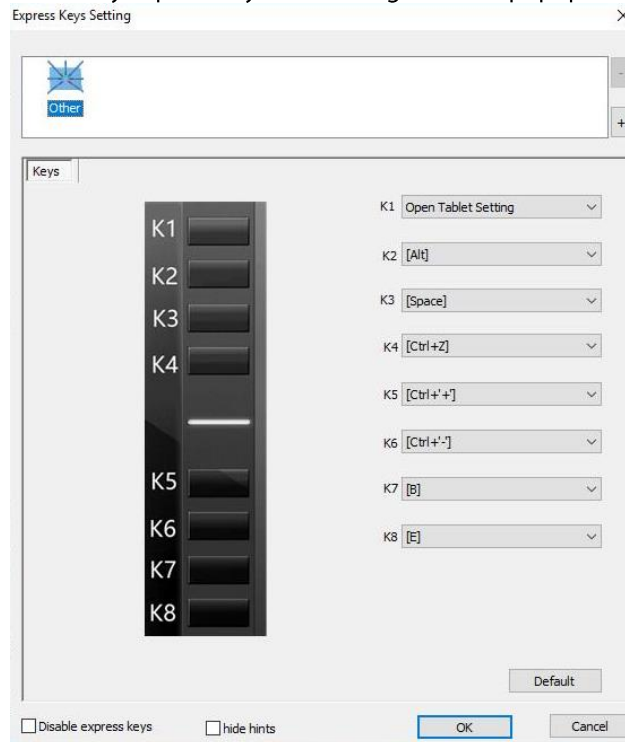


Image 4-9: Keys

You may customize the functions of your express keys here. Use the "Function Key" option to program custom keystrokes.

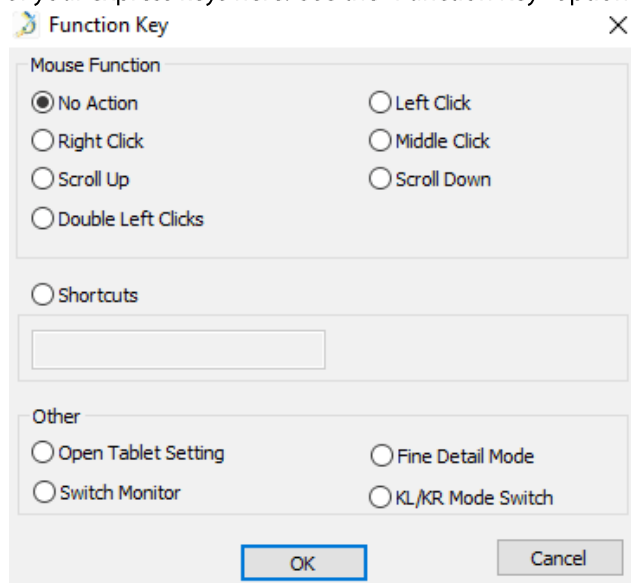


Image 4-10: Function Key

1.8. XP-Pen Logo

If a driver update is available, you will see a blue arrow here (). Click the arrow to update your driver.

1.9. Click our logo to visit our website.



Image 4-11: XP-Pen logo

Mac

To open the Star 03's driver settings, open Finder > Applications > PenTabletSetting.
Driver UI

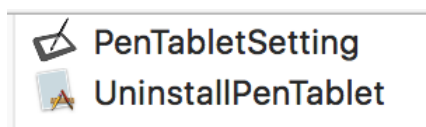


Image 4-12: Tablet Setting

1.1. Pen

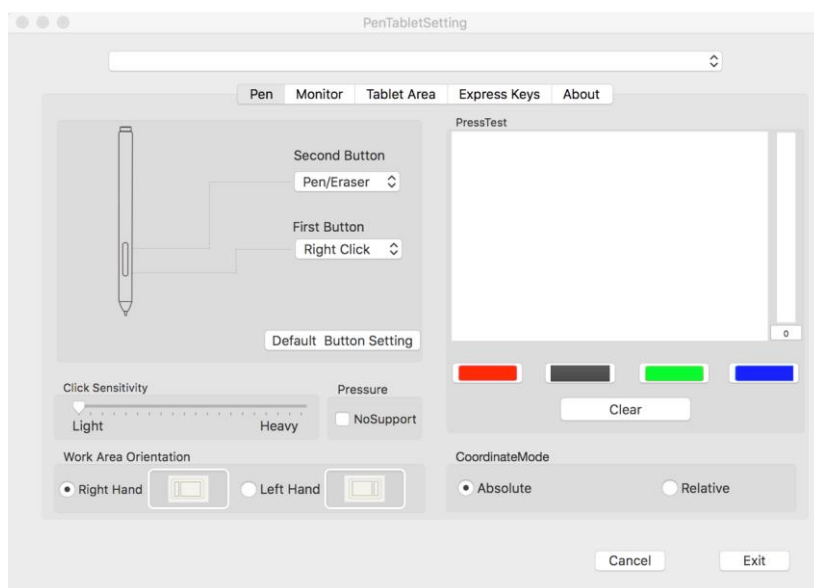


Image 4-13: Pen

Note:

Pen/Eraser Toggle

With the stylus in range of the Star 03's working area, press the assigned barrel button to toggle between pen and eraser modes in compatible drawing software. The current mode will briefly be displayed on your monitor.

- (1). In this tab, you may customize the functions of your stylus' barrel buttons, adjust pressure sensitivity, and test your pen pressure.
- (2). Click "Default Button Setting" to revert to manufacturer settings.
- (3). Pressure "No Support" function can disable pen pressure when drawing
- (4). Lighter sensitivity means that digital pressure level will rise with less applied physical pressure.
- (5). Absolute (Pen) Mode: Standard tablet mode; Each point of the tablet's work area corresponds to an absolute point on your computer display.
Relative (Mouse) Mode: Mouse mode; The tablet's work area does not correspond to absolute points on your computer display and your pen works as a standard mouse.
- (6). Right & Left Hand Mode: The Star 03 are set up for right-handed use by default. When switching to left-handed mode, be sure to rotate the actual physical tablet 180 degrees to place its shortcut keys on its opposite side.

1.2. Monitor

The "Monitor" tab allows you to configure your tablet for use with single or dual monitors. The tablet can also be configured to use only a portion of your display.

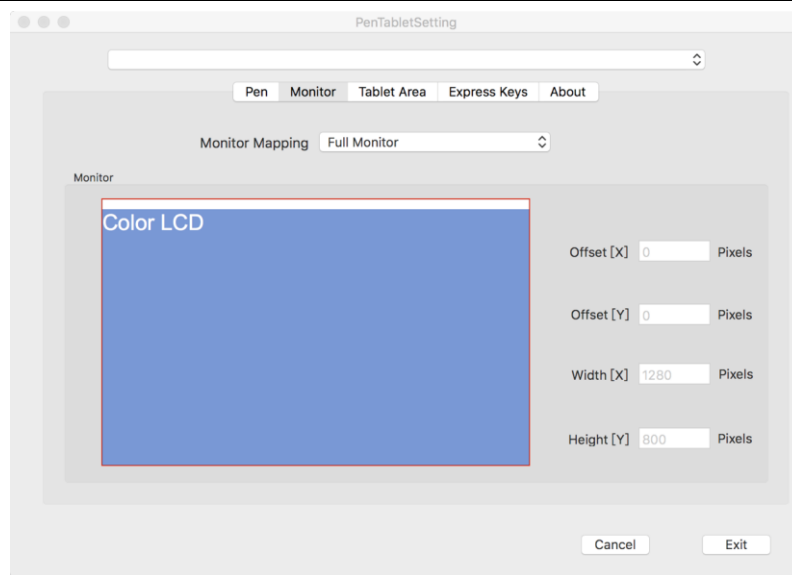


Image 4-14: Monitor

1.3. Tablet Area

You may adjust your tablet's on-screen working area in this tab.

"Full Monitor" automatically selects the largest possible working area.

"Screen Ratio" adjusts the tablet's on-screen working area to match your monitor's resolution.

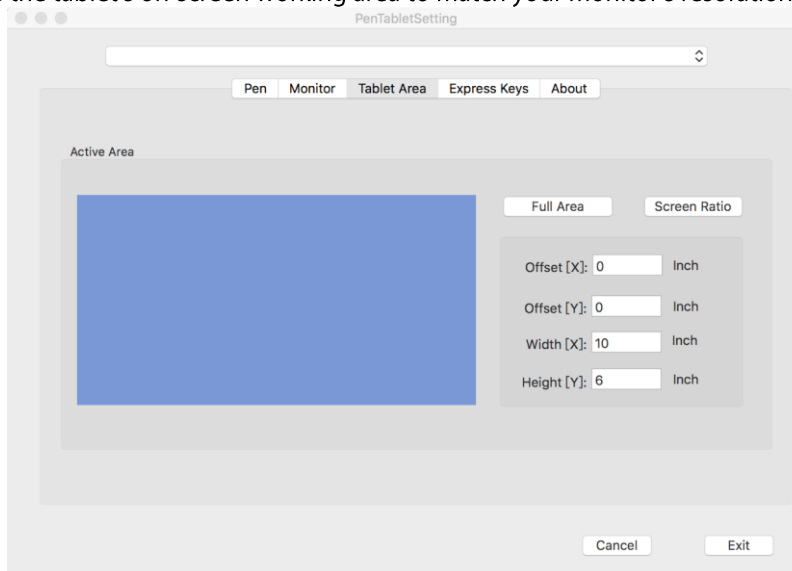


Image 4-15: Tablet Area

1.4. Express Keys

In the Express Keys tab, you may choose your preferred functions for the Star 03's shortcut keys. Use the "Reset Customer Defined" option to program custom keystrokes.

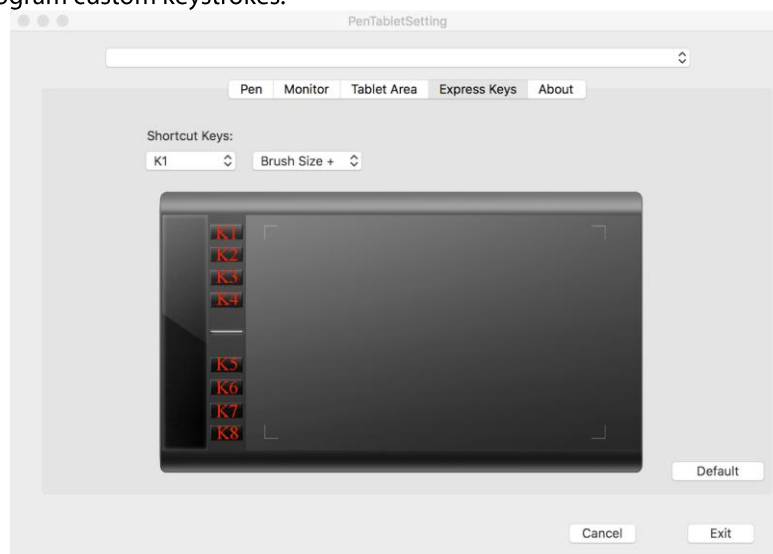


Image 4-16: Express Key

1.5. About

This tab displays the current version of your driver software.

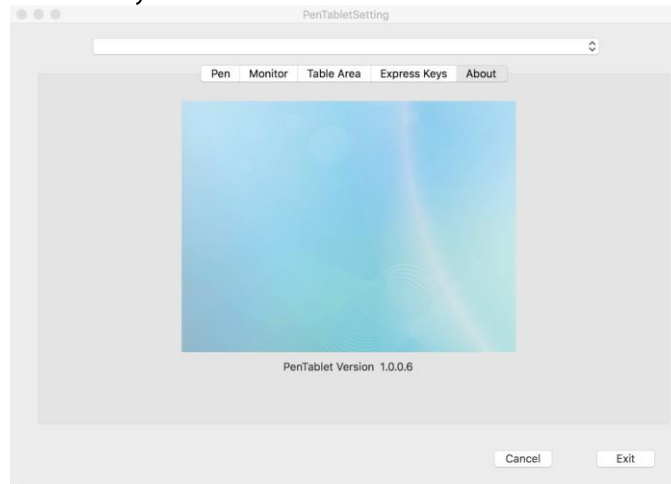


Image 4-17: About

{ V. Driver Uninstallment }

Windows

In the Start menu, open [Settings] → [Apps & features]. Find “Pentablet” and click “Uninstall.” Follow the on-screen instructions.

Mac

Open [Finder] → [Application] → [Pen Tablet], then click “Uninstall Pen Tablet” and follow the on-screen instructions.

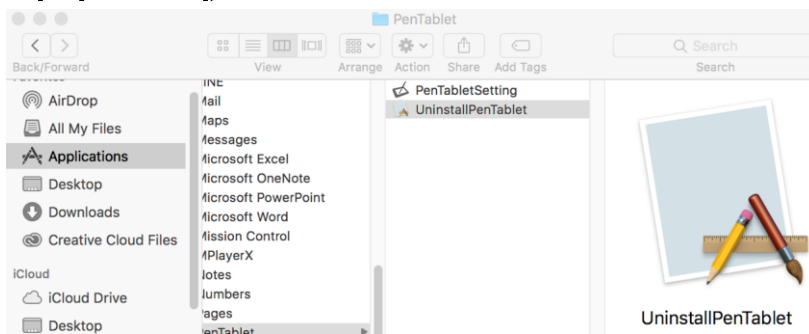


Image 5-1: Mac uninstall

NOTE:


When attempting to reinstall the Star 03 driver, be sure to reboot your computer after the uninstallment is complete.

{ VI. FAQ }

1. I can't use the stylus to control the cursor.

- Does the tablet's status indicator light turn on when the stylus is in contact with the working area?
- Yes: Uninstall the Star 03 driver and reboot, then connect the tablet to your computer and test your stylus. If the cursor responds to your pen input, the tablet's hardware is functional. Reinstall the Star 03 driver according to these steps (Windows):
- Download the tablet's latest driver from www.xp-pen.com, then extract the .zip contents to the desktop.
- Connect the tablet then run the driver installation. Complete the installation, then reboot.

2. How do I know that the Star 03 driver installed successfully?

After installing the driver, the Star 03's driver icon  should be visible in your system tray on the bottom-right of your screen (Windows OS) and desktop. Pen input will control the cursor and pressure sensitivity will be functional in the driver.

3. How do I determine if a problem is software or hardware related?

- a. Connect and install the Star 03 on a different computer. If the tablet functions properly on the new computer, you are experiencing a software issue—confirm that ALL tablet drivers (including the Star 03) are uninstalled and removed from your computer, then reinstall the Star 03.
- b. The Star 03's indicator lights will help you determine if an issue is hardware-related. When functioning properly, the white status indicator light will light up when the stylus pen is in range of or touching the tablet's working area.

If you have any questions, please contact us at:

Skype: XP-Pen

Web: www.xp-pen.com

Email: service@xp-pen.com